

KM-8030 Highlights

- 80 Pages per Minute
- Standard 200 Sheet Dual Scan Document Processor
- Standard 4,150 Sheet Paper Supply
- Optional Network Printing
- Optional Network Scanning
- Advanced Finishing and Paper Handling Options
- Optional KYOcapture Solution
- Kyocera Long Life Components
- Monocomponent Technology

Imagine a document imaging solution that simplifies day-to-day business activities while supporting IT strategies of efficiency and network integration. One that combines robust print, scan, and copy capabilities in a powerful network solution, while offering integration with Content Management systems for advanced document capture and routing. Presenting the KM-8030 from Kyocera. Raising the bar for productivity, it brings serious multifunctional capabilities to any enterprise.

Engineered to meet the challenges all businesses face, and manufactured with Kyocera's reputation for **quality and reliability**, the KM-8030 delivers serious performance. Exceptional printing, scanning and copying features combine with fast output speeds, letting users focus on the task at hand instead of the process. Kyocera advanced utilities and software solutions support the process, by assisting network administrators in better managing document flow and relieving the administrative burden on the IT sector.

Superior performance does not need to come in a high-priced package. Kyocera multifunctional devices are extremely price competitive, and are among the most cost-efficient in the industry. They combine long life consumables with unparalleled reliability, for faster ROI and a more positive bottom line.

The mission-critical nature of document processing requires a solution that can rise to the challenge. The KM-8030 responds with power and flexibility that is second to none, for results you can count on time and again.



NETWORK/PRINT

Robust Network Capabilities Combine with Exceptional Output Quality

The KM-8030 offers impressive network integration abilities, including an optional Network Interface and Print Controller that merge seamlessly with most enterprise environments, including Windows®, Mac, Novell® and UNIX. Kyocera-designed intelligent device solutions support the KM-8030 by allowing access to and control over output, features and resources. Users will find their jobs are processed more quickly and efficiently, thanks to easily configurable settings. Administrators will appreciate the simplicity with which they can **smartly manage the network** – all from the convenience of the desktop.

On-Demand printing is critical to any enterprise. File sizes are often large, and applications complex. The powerful KM-8030 rises to the challenge, with a 600 MHz processor and a robust printer memory of 64 MB (upgradeable to 576 MB). An impressive output speed of 80 pages per minute ensures document delivery as fast as it's needed. The optional e-MPS Printer Hard Disk Drive (HDD) provides additional memory for enterprises requiring job storage space, secure print, or virtual mailboxes.

Crisp, clear imaging is at the heart of the KM-8030's print capabilities. Users can select from professional quality print output: 600 x 600 dpi, Fast 1200 mode, and 1800 x 600 dpi interpolated resolution via Kyocera Image Refinement (KIR). The KM-8030 also offers 300 x 300 dpi and EcoPrint draft modes, for toner-saving quick printing of e-mail and internal communications.

Kyocera understands the complex network requirements of today's enterprise. Our **advanced KX Driver** ensures consistency, compatibility and integration of all Kyocera Multifunctionals on the network. It allows users and administrators to expediently customize print settings and control all the features and options directly from the desktop, for any and all linked devices. Kyocera's KM-NET Suite of software, tools and utilities provides additional capabilities, facilitating a wide range of network administration functions including device monitoring, diagnostics, accounting and much more. For added flexibility, our PRESCRIBE solution enables users to create and store forms and letterhead for output as needed, eliminating costly pre-printed materials and the extensive storage space they require.

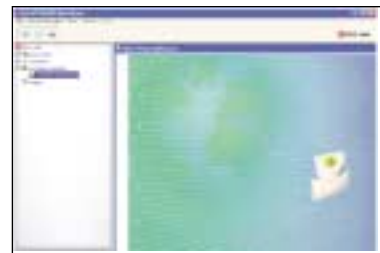


UNIVERSAL PRINT DRIVER

The KX Driver features a common user interface across all Kyocera multi-functionals. Offering total control over all features of the KM-8030, it facilitates both set-up and use.

KYOCERA DATA SECURITY KIT

An advanced solution for managing and protecting the security of information across select Kyocera Multifunctionals, the Kit is designed to meet the privacy demands of today's digital office environments. Acting as a powerful "Memory Scrubber," it automatically overwrites information stored on a hard drive when a device is powered up, and/or after each copy/print/scan job. This prevents unauthorized user access to confidential information retained in the device's internal memory.



KM-NET VIEWER

Providing centralized network device management of all connected printers and copiers/MFPs, KM-NET Viewer reduces administrative monitoring time while facilitating the installation and updating of firmware. KM-NET Viewer Web 2.0, a web-based version of this solution is built on a Java™ platform and offers the same extensive functionality.

COPY

Impressive Copy and Finishing Capabilities For All Your Business Needs

An extensive array of copier and finishing features makes the KM-8030 the ideal addition to the busy enterprise. All the **standard functionality** you'd expect including numerous imaging modes, magnification/reduction, proof copies, mirror image, page numbering and erase modes, combines with advanced features that set the KM-8030 apart from other devices in its class:

Dual Scan Document Processor – The KM-8030 offers the segment's first 200 sheet Dual Scan Document Processor. As a result, larger quantities of originals can be scanned in the same batch, avoiding the need to split them into numerous smaller ones and the possibility of errors in page ordering when jobs are recombined. As a Dual Scan Processor, it reads double-sided pages in a single pass, improving processing speed, input time and productivity.

Document Management – A standard 40GB Hard Disk Drive enables the KM-8030 to store up to 140,000 pages, so frequently needed documents are always ready to be output. Documents and files can be shared with the Synergy Print or Shared Data Box, and Forms Gallery will allow documents to be saved for integration with the Forms Overlay feature.

Stackless Duplexing - Stackless duplexing abilities speed the output of two-sided documents. For added flexibility, copies can be configured in any of five different duplex modes, and in sizes ranging from Statement to Ledger.

Enhanced Paper Capacity - The KM-8030 can accommodate paper weights of up to 90 lb. Index via the standard paper drawers, enabling users to reserve bypass trays for cover stock, envelopes, or other paper sizes. A 4,150-sheet capacity is standard. An optional 4,000 sheet Large Capacity Tray increases the available paper supply to a productivity-boosting 8,150 sheets from six different sources, allowing a varied combination of paper stocks and sizes in the same machine.

Enhanced Finishing Capabilities - The optional 3,000 sheet Multi-Finisher features 50-sheet, 4-position and saddle-stitch stapling, and mixed size support, and can be equipped with our 5 Bin Multi Tray mailbox. This unique solution can accept finished sets, from print or copy, saving valuable time in a busy workgroup. Optional 2/3 Hole Punch is also available.

Booklet Finishing - The optional Booklet Folder adds increased finishing flexibility, enabling folding and saddle stitching of booklets up to 16 sheets, in Letter, Legal, and Ledger sizes.



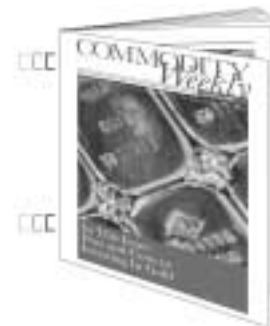
DUAL SCAN DOCUMENT PROCESSOR
Offering the segment's first 200 sheet Dual Scan Document Processor, the KM-8030 improves processing speed and input time.



HIGH YIELD TONER CARTRIDGE
Kyocera high yield consumables go far in reducing Total Cost of Ownership while boosting productivity.



EASY TO USE CONTROL PANEL
Users can access all features and functions of the KM-8030 directly from the easily programmable control panel.



BOOKLET FINISHING
Folding and stapling options allow users to create attention-getting booklets with up to 16 sheets.

Share Documents Across the Network or Across the World

The ability to quickly scan and transmit paper-based documents is **mission critical to today's businesses**, and the KM-8030 offers one of the most comprehensive solutions available. Its optional Network Scan System provides the functionality that an enterprise demands, plus an extensive range of document utilities to facilitate the process.

KM Document Flow – This device-based document management system enables hard copies to be scanned and archived directly from the Touch Screen Interface. Documents can be indexed within certain fields and placed into folders and subfolders for easy retrieval when needed. Scan resolution is user set at up to 600 dpi, and scan speeds are an impressive 80 originals per minute.

Scan to File for PC and Mac – Significantly enhance workflow flexibility across the network. The utility lets users scan a document or pages as PDFs or TIFFS, and electronically push them through the system to individual workstations for editing or other purposes.

Scan to E-mail – This feature enables documents to be transmitted via SMTP. Kyocera's LDAP Converter Utility provides additional timesaving features, allowing the KM-8030 to search for E-mail addresses from corporate databases of over 65,000 designations. The KM-8030 is also TWAIN compliant, allowing scanning through software such as PhotoShop® or Acrobat®.

Address Book – The KM Scanner Address Book is installed locally on an individual's PC, allowing up to 100 names to be securely entered for access only by the user.

Address Editor – A useful tool that facilitates the configuration and defaults for multiple machines, the Address Editor Utility adds tremendous time savings to the administrative process. Settings can be entered at an Administrator's workstation once, and then broadcast to other Kyocera MFPs across the network.



SCANNING VERSATILITY

Kyocera's TWAIN Drivers for both PC and Mac environments allows users to scan directly to their most important applications straight from the desktop.



NETWORK SCANNING

Documents can be scanned as universal PDFs or editable TIFFs, at resolutions of up to 600 DPI, and distributed via E-Mail or shared across the network for efficient communication.



NETWORK SCANNING

A complete suite of software, tools and utilities are provided with the optional Network Scan System, dramatically improving productivity, for the Administrator and end-user.

KYOcapture

KYOcapture Document Capture Workflow Solution – Adding a New Dimension to Multifunction Capabilities

KYOcapture is an optional server-based **Document Capture Workflow Solution.**

As open-architecture middleware, it is designed to seamlessly integrate with existing or new document management systems, as a portal through which documents can travel.

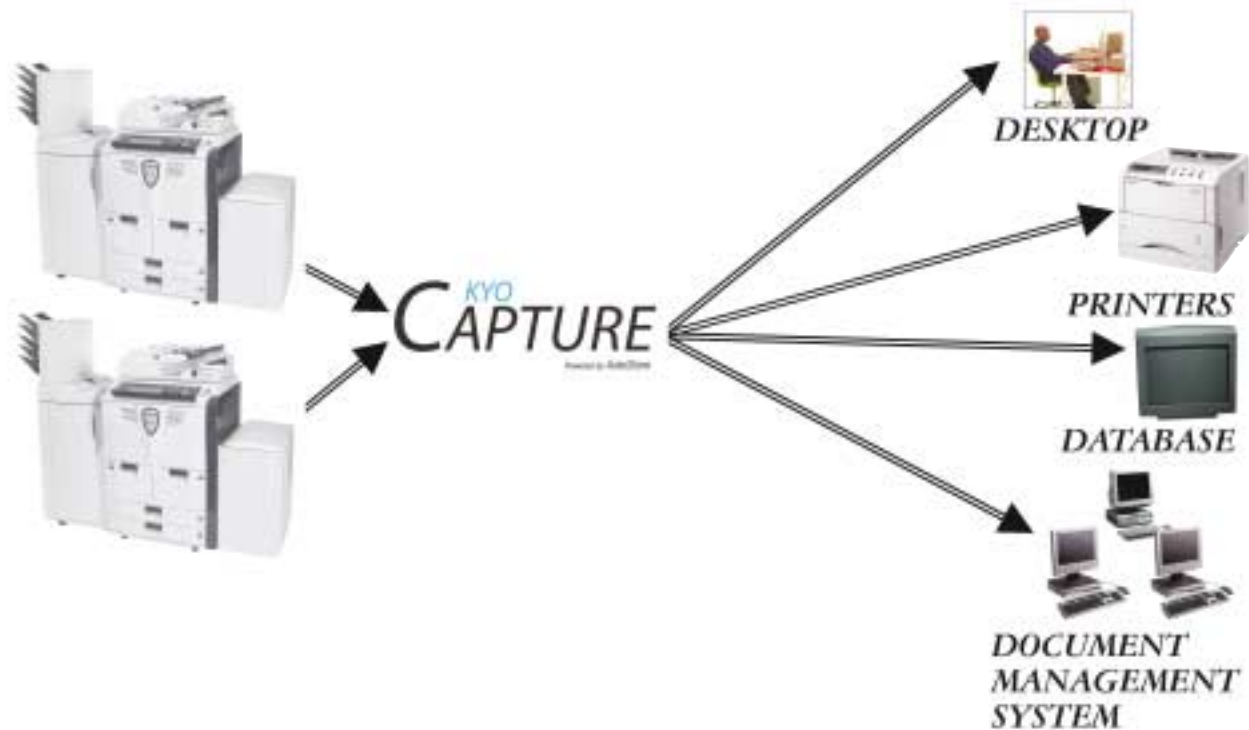
Select Kyocera multifunctional products (MFPs) seamlessly capture paper-based documents, which can then be processed and routed to multiple locations. By utilizing the same devices already employed for printing and copying, Kyocera enables businesses to realize increased efficiencies in their document workflow, as well as related cost savings.

Logon to **KYOcapture.com** for additional details on integrating select Kyocera multifunctional devices into your document management system.



KYOcapture Key Features:

- Automated document capture from select Kyocera multifunctional products (MFP)
- Seamless integration with existing document management systems
- Centralized control of workflow and device management
- Custom indexing right from the control panel for improved efficiency
- Simple drag and drop interface to create and change the workflow
- Open architecture – compatible with virtually all document process and routing solutions
- Bi-directional look up for accurate and fast indexing at the MFP
- Flexible and scalable with numerous options available



capture > process > route

Doing More with Less – Multifunctional Devices That Go Far Beyond Networking and Ease of Use

Kyocera is committed to helping companies streamline costs by minimizing hardware investments. Our **Optimize** initiative ensures the products we develop reflect a sound business strategy that addresses both business needs and IT demands. By offering one of the most comprehensive arrays of features and functionalities in its class, the KM-8030 makes a substantial contribution towards achieving that goal.

Optimize Business

Document capture, management, and distribution must be handled consistently, accurately, and securely throughout an organization. The KM-8030's user-friendly features put document content to work quickly and efficiently. Network administration capabilities provide the system-wide control needed to help optimize business activities. By facilitating the document distribution process while combining multiple functionality in one cost-saving device, the KM-8030 enables businesses to **maximize productivity** without investing in additional hardware.



Optimize IT

Kyocera recognizes the importance of aligning IT goals with business strategies. The KM-8030 is designed to reflect enterprise demands of maximum uptime and quicker return on investment (ROI). **Seamless integration** with existing systems and powerful network administration tools simplify IT management without compromising the productivity-enhancing features users require.



OPTIMIZE BUSINESS

- Multifunctional devices that boost productivity and streamline hardware investments
- Software solutions for system-wide control
- Long-life consumables for lower operating costs
- Industry-leading product reliability for maximum uptime
- Knowledgeable and professional customer service

OPTIMIZE IT

- Software support for IT strategies
- Easily networkable printers and multifunctional devices
- Common drivers and user interfaces across product lines
- Facilitated administrative software capabilities reduce the burden on IT departments
- Network-wide device monitoring
- Standard look and feel across product lines reduces training time

The KM-8030 is the powerhouse your business needs. Put it to work today, and see what optimized document imaging can do for your enterprise.

KM-8030 Specifications

BASIC SPECIFICATIONS:

Configuration:	Console Digital Copier with Standard 200 Sheet Dual Scan Document Processor, Duplex, 1,500 Sheets x 2 Letter Size Paper Decks, 525 Sheets x 2 Paper Drawers Plus 100 Sheet Multi-Purpose Tray, Optional Network Printing and Scanning, Optional Advanced Finishing and Paper Handling.
Resolution:	600 DPI, Interpolated 1800 x 600 DPI Resolution / 256 Levels, Fast 1200 Mode Print Resolution
Copier Memory:	Standard 128MB RAM, 40GB Hard Disk Drive
Magnification:	Full Size, 7 Reduction, 4 Enlargement Preset Ratios, Plus 25-400% Zoom
Electrical Requirements:	120V, 60Hz, 16A
Dimensions:	26.8"W x 30.9"D x 46.9"H
Weight:	415 lbs
Max Monthly Volume:	500,000 Pages Per Month

OUTPUT SPEEDS:

Warm-Up Time:	Within 30 Seconds, Program and Scan During Warmup, Auto Start
First Copy Out:	2.9 Seconds (Faceup)
First Print Out:	2.5 Seconds (Facedown)
Pages Per Minute:	80 Letter, 50 Legal, 40 Ledger

PAPER SUPPLY:

Standard Paper Sources:	1,500 Sheets x 2 Letter Size Paper Decks, Dual 525 Sheet Universal Paper Drawers, 100 Sheet MPT, Auto Selection / Switching, Add Paper While Running
Drawer Paper Size:	5.5" x 8.5" - 11" x 17"
MPT Paper Size:	5.5" x 8.5" - 11" x 17"
Std / Max Paper Capacity:	4,150 / 8,150
Paper Weight:	16 lb Bond - 90 lb Index via Paper Drawers, 13 lb Bond - 110 lb Index via MPT
Input Materials:	Bond Paper, Recycled Paper, Transparencies, Labels, Envelopes

DOCUMENT PROCESSOR:

Type:	Dual Scan Document Processor (DSDP)
Acceptable Originals:	5.5" x 8.5" - 11" x 17", Mixed Size Processing
Capacity:	200 Sheet DSDP / 80 Letter Size Originals Per Minute
Paper Weight:	13 - 43 lb Bond

DUPLEX UNIT:

Paper Size:	5.5" x 8.5" - 11" x 17"
Paper Weight:	16 - 28 lb Bond
Duplex Modes:	Standard 1:2, 2:2, Book: 2, 2:1

COPY FUNCTIONS:

Imaging Modes:	Text, Photo, Text / Photo, Auto, Manual, ECO
Continuous Copy:	Up to 9,999, Auto Reset to 1
Additional Features:	Auto Center, Magnification and Paper Select, Batch Copy, Booklet Mode, Book Mode, Combine Image, Covers, Inserts, Erase Mode, Image Overlay, Image Rotate, Image Reverse, Interrupt, Job Build, 9 Job Reserves, Job Queue, Margin Shift, Mirror Image, Memo Mode, Modify Copy, Proof Copy, Page Numbering, Transparency Mode, Job Time Information, 1,000 Management Codes, XY Zoom, 3 Shortcut Keys Document Management: Store Documents, File Merge, Forms Composition, Repeat Copy

PAPER HANDLING OPTIONS:

PAPER DECK: PF-650

Paper Capacity:	4,000 Sheets
Paper Weight:	17 lb Bond - 90 lb Index
Paper Size:	8.5" x 11"
Dimensions / Weight:	14.6"W x 23.2"D x 27.3"H / 90.4 lbs

MULTI-FUNCTIONAL FINISHER: DF-650

Stack Capacity:	Main Tray: 3,000 Sheets; Sub Tray: 200 Sheets
Paper Size:	Main: 8.5" x 11" - 11" x 17"; Sub: 5.5" x 8.5" - 11" x 17"
Paper Weight:	12 lb Bond - 110 lb Index
Staple Capacity:	50 Sheets: 8.5" x 11"; 30 Sheets: 8.5" x 14", 11" x 17"
Edge Staple Position:	4 Positions: Top Left, Bottom Left, Left Side, Center
Saddle Stitch:	8.5" x 11" - 11" x 17"; Up to 16 Sheets
Dimensions / Weight:	31.3"W x 25.2"D x 42.1"H / 161 lbs

MULTI TRAY: MT-1

Number of Trays:	5
Capacity:	150 Sheets (8.5" x 11") Per Tray
Paper Size:	5.5" x 8.5" - 11" x 17"
Paper Weight:	12 lb Bond - 90 lb Index
Dimensions / Weight:	14.5"W x 15.5"D x 22.6"H / 33 lbs

BOOKLET FOLDER: BF-1

Folding Capacity:	1 - 16 Sheets
Capacity:	1 - 5 Sheets - 30 Booklets 6 - 10 Sheets - 20 Booklets 11 - 16 Sheets - 10 Booklets
Paper Size:	8.5" x 11" - 11" x 17"
Paper Weight:	16 lb Bond - 110 lb Index, Over 20 lb is one sheet only
Dimensions / Weight:	23.3"W x 17"D x 10"H / 42 lbs

PUNCH UNIT: PH-4

Paper Size:	8.5" x 11" - 11" x 17"
Paper Weight:	12 lb Bond - 110 lb Index
Number of Holes:	2 and 3
Weight:	7 lbs

CONNECTIVITY OPTIONS:

PRINT: PRINT SYSTEM (V)

Controller:	Embedded PowerPC750 / 600 MHz Controller
Printer Memory:	Standard 64MB, Upgradeable to 576MB via 100 Pin DIMMS, Optional e-MPS Printer HDD, Standard CF Card Slot (Type 1)
Supported PDL/Emulations:	PRESCRIBE, PCL6 (PCL XL, PCL 5e), KPDL3 (PS3), KGGL (HP-GL/2), Diablo 630, IBM ProPrinter X24, Epson LQ850, Line Printer
Fonts:	80 Outline Fonts for PCL XL/5e, 136 Outline Fonts for KPDL3, 1 Bitmap Font
Windows® OS Compatibility:	Windows® 95/98/Me/NT4.x/2000/XP/2003
Novell® OS Compatibility:	Novell NetWare® 3.x/4.x/5.x/6.x
Mac OS Compatibility:	OS 8.x/9.x/10.x
UNIX OS Compatibility:	Sun OS 4.1.x; Solaris 2.x; AIX, HP-UX (LPR)
Connectivity / Interface:	Standard 10/100BaseTX, High Speed USB 2.0, Parallel IEEE1284
KUIO LV Expansion Slots (2):	Optional e-MPS Hard Disk Drive Optional IB-22 Enhanced Wireless NIC; IB-11 RS-232C Serial Interface
Supported Protocols:	TCP/IP, IPX/SPX, AppleTalk, NetBEUI
Driver:	KX Driver for Windows®, PPD for Mac, PPD for Linux/UNIX, Certified Uni Driver
Utilities:	KM-NET Viewer, PDF Direct Print, KX Spool Center, KM-NET for Clients, KM-NET Printer Disk Manager, Network Advanced Setup Utilities, PRESCRIBE Utilities

E-MPS HARD DISK DRIVE: HD-10

Enables e-MPS Functions:	Private Print, Job Storage, Quick Copy, Proof and Hold, Virtual MailBoxes
--------------------------	---

NETWORK SCANNING: SCAN SYSTEM (G)

Resolution:	200, 300, 400, 600 DPI
Scan Speed:	Up to 80 Sheets Per Minute
File Formats:	PDF, TIFF
Connectivity:	Standard 10/100BaseTX
Supported Protocols:	TCP/IP
Scanning Features:	KM Document Flow System - Document Management System, Scan to PC/File, Scan to Mac, Scan to E-Mail, TWAIN
Driver:	TWAIN Driver, TWAIN Driver for Mac
Utilities:	KM DB-Assistant, KM Scanner File Utility, Scan to Mac Utility, KM Scanner Address Book, Address Book Editor, LDAP Converter Utility, Network Advanced Setup Utilities

KYOCAPTURE: DOCUMENT CAPTURE WORKFLOW SOLUTION

KYOCapture is a server based document capture application that provides an automated rules based workflow at the MFP's operation panel

DATA SECURITY KIT: DATA SECURITY KIT (B)

Provides security overwrite for automatic and manual deletion of copy and print data

ADDITIONAL OPTIONS:

32/64/128/256MB DIMMS for Print System



Specifications and design are subject to change without notice. For the latest on connectivity visit www.kyoceramita.com. All trademarks and registered trademarks are the property of their respective manufacturers.

Kyocera Mita America, Inc. Headquarters: 225 Sand Road, PO Box 40008, Fairfield, NJ 07004-0008, USA
©2005 Kyocera Mita America, Inc.
IC# 87166673



www.kyoceramita.com