

# Canon

imageRUNNER  
9070/105+



PRODUCTION  
SYSTEMS



meap  
POWERED BY



imageRUNNER®  
9070 / 105+

PRODUCTION SYSTEMS

## CONDUCT YOUR BUSINESS WITHOUT BOUNDARIES

Free yourself from the limitations of yesterday's technology. Remove the barriers that restrict your ability to produce and distribute information at the time and place of need, and liberate your business with the Canon imageRUNNER® 9070 and imageRUNNER® 105+ systems.

Designed to seamlessly integrate with your core business applications, these new-generation imageRUNNER devices bridge the hard-copy and digital workflows of your organization with access that's secure, easy, and instant. The imageRUNNER 9070/105+ systems can serve as the origin of your business communications or as the destination. Whichever the case, they will quickly become an indispensable part of your document production and distribution services.

The imageRUNNER 9070/105+ devices are engineered to handle long run-lengths and high volumes associated with large corporate departments, in-plant and corporate reprographic departments, commercial print facilities, and data centers. A heavy-duty design, high duty-cycle, and advanced throughput and finishing capabilities\* help make the imageRUNNER 9070/105+ a perfect fit for your volume-intensive environments.



\*May require optional equipment.

## PRODUCE DOCUMENTS WITH MINIMUM EFFORT AND MAXIMUM EFFECT

### Uncompromising Speed and Image Quality

Even at their rated speeds of up to 90 and 105 pages per minute (letter), respectively, the imageRUNNER 9070/105+ devices maintain consistent high image quality at up to 2400 equivalent x 600 dpi resolution, ensuring that your mission-critical jobs are produced on-time, every time.

### Ease-of-Use

Whether you're an entry-level operator working between semesters or an experienced copy center professional, the imageRUNNER 9070/105+ devices help eliminate the guesswork from creating professionally finished documents with an easy-to-use control panel interface and intuitive print driver software. For all their technological merits, the imageRUNNER 9070/105+ models are surprisingly easy to operate and maintain—the result is with minimum effort and maximum uptime.

### Professionally Finished Documents

Document production is not complete until the output is *finished*. Offering the most robust finishing capabilities\* in their class, the imageRUNNER 9070/105+ systems deliver what was previously available only through outsourcing. Now you can produce beautifully finished sets of documents in-house, including church bulletins that are stitched, folded, and trimmed; course syllabi or business reports with printed tabs and preprinted color covers and inserts; or sales reports, complete with Z-folded spreadsheets.

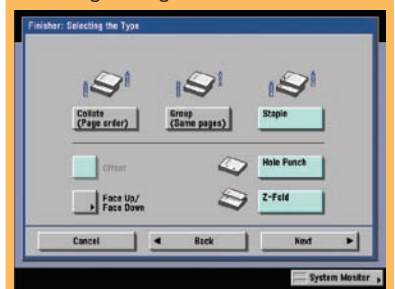
### User-Friendly Control Panel



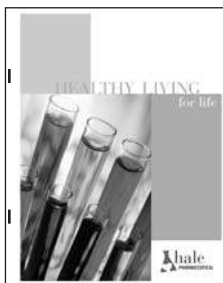
### Express Copy



### Finishing Settings



### A Variety of Finishings\*



100-Sheet Stapling



Cover Insertion and Booklet-Making



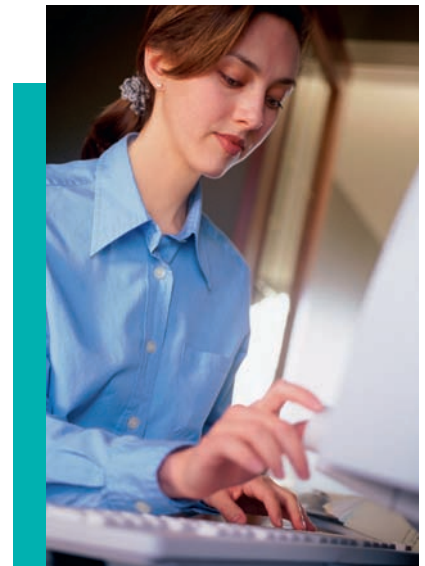
Two- or Three-Hole Punching



Z-Folding

\*May require optional equipment.

## EXCEPTIONAL COPY AND PRINT PERFORMANCE FOR YOUR HIGH-VOLUME REQUIREMENTS



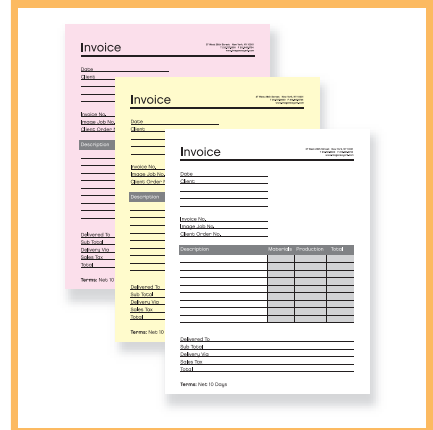
### Flexible Media Handling

With the imageRUNNER 9070/105+ devices, documents can be copied onto a wide variety of paper sizes and media types, including tabs, transparencies, card stock, and carbonless media specifically designed for Canon imageRUNNER systems. Whatever your printing needs may be, Canon has the specialty media available to meet them.

### Connectivity Without Complications

Compatible with most of today's popular operating systems, the imageRUNNER 9070/105+ models are at home in virtually any network environment. Standard Ethernet connectivity provides ample data transfer speeds and free Cascade and Remote Copy functionality for environments with multiple device installations.

Create custom forms in seconds with Canon Carbonless Media.



### Cascade and Remote Copy

Cascade Copy



Remote Copy



Double system productivity and enable printing directly to the point-of-need by leveraging the power of other imageRUNNER 9070/105+ devices installed on the network.

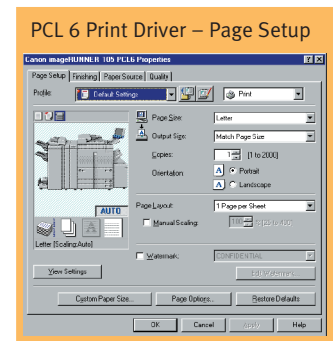
## A PRINT SOLUTION FOR EVERY ENVIRONMENT

The **Canon Network Multi-PDL Printer Kit-F1\*** makes use of the imageRUNNER 9070/105+ internal processor to handle text-intensive print jobs where PCL data represents the bulk of jobs sent to the printer. GUI-enabled drivers for PCL, PostScript®, and Canon Ultra Fast Rendering (UFR) II are available.

The **Canon imagePASS-M3 Print Controller\*** is an external RIP designed by EFI® to meet the needs of customers printing true Adobe® PostScript files, complex graphics, and variable data output. The imagePASS-M3 adds support for hot folders, and leverages EFI Command WorkStation®, EFI Impose, Job Monitor, and Fierly® FreeFrom™ utilities.

**EFI MicroPress® Pro Series\*** delivers powerful digital prepress and workflow management capabilities for your Canon imageRUNNER 9070/105+ system. The MicroPress Pro Series features post-RIP digital prepress capabilities to provide users with total independence from the original application and sophisticated authoring tools to make job and page-level changes. And every MicroPress Pro Series model features an open and modular architecture for a painless upgrade path to new technology.

**I-O® Corp Host Solutions\*** seamlessly integrate a Canon imageRUNNER device into an IBM host print environment. With fast and reliable conversions of SCS and IPDS data to PCL, I-O host print solutions can drive an imageRUNNER system at rated speeds to handle the large print volumes typical of an AS/400 or mainframe environment—and they do so while utilizing the full finishing support of the imageRUNNER device.



### Value-Added Printing Functionality

- **Secured Print** for document confidentiality.
- **Integration with imageWARE™ Publishing Manager** for drag-and-drop document building.
- **Direct Print** (PDF, TIFF, JPEG, and PS files) to print documents without opening the authoring application.
- **Bar-Code Printing\*** support for quick and accurate production of bar codes in SAP R/3 environments.
- **Web Access Software\*** enables the printing of Web pages and downloadable PDF files directly from the device control panel for users without access to a computer.

\*Optional feature. Check with your local Authorized Canon Dealer for availability.

## ALL OUR BASES ARE COVERED

Allow Canon to help lift the communication limitations of your business. Scan, convert, distribute, modify, compile, process, and print documents with minimum effort using Canon's suite of document management solutions.

**User Mail Boxes** offer a centralized document archival and distribution vehicle for individual or departmental use. Scan hard-copy documents or send jobs from a connected PC for storage, job-merging, duplication to other Mail Boxes, or batch-printing.

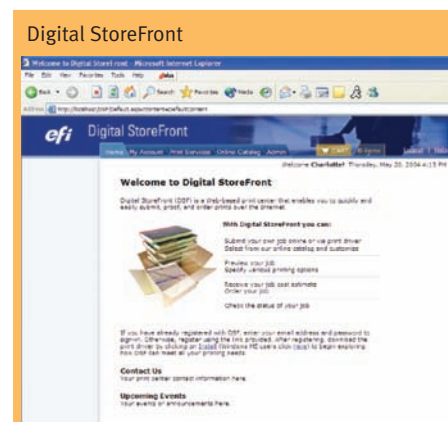
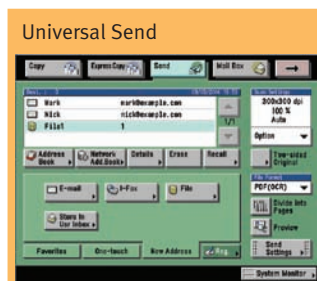
**Network ScanGear** is Canon's pull-scanning application that's available, free-of-charge, for print-enabled imageRUNNER 9070/105+ systems. Capture documents from the ADF or platen glass for transmission over the network back to your desktop for a simple, cost-efficient way to convert, annotate, and archive your documents.

**Universal Send™** converts hard-copy documents for distribution to any network destination—individual or group e-mail addresses, Internet faxes, local Mail Boxes, network folders, and document management systems—in one simple operation. Users may select from several industry-standard file formats, take advantage of searchable PDF (OCR) and PDF encryption capabilities, and select recipients from up to five corporate e-mail servers. With URL Send, large files residing in a Mail Box can be

distributed as a URL link, greatly reducing network traffic and unclogging personal e-mail accounts.

**eCopy ShareScan OP™\*** integrates hard-copy operations into the workflow of enterprise software applications such as reporting, administration, document management, ERP, financials, and HR and customer management. eCopy ShareScan OP sets a new standard for simple, secure, and cost-effective distribution of electronic documents—all of which are accessible from the control panel interface of the imageRUNNER 9070/105+ devices.

**Efi Digital StoreFront™** is a turnkey Web-based print center that simplifies print job submission and proofing over the Internet. Digital StoreFront automates proofing, estimating, billing, and reporting. It also streamlines print center operations by seamlessly integrating data flow, while optimizing job turnaround by automating the flow of print jobs to Canon imageRUNNER and CLC® systems.



Note: All features listed on this page are optional with the exception of the User Mail Boxes.  
\*Check with your local Authorized Canon Dealer for availability.

## YOUR BUSINESS IS UNIQUE AND SO ARE THE imageRUNNER 9070 AND imageRUNNER 105+ DEVICES



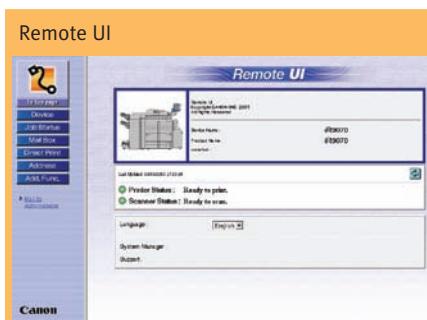
### Achieve Complete Control

Take control of departmental workflows. Canon provides a complete suite of tools and utilities to help simplify imageRUNNER 9070/105+ device configuration, administration, access, and system customization. Canon NetSpot® Suite and Remote UI™ ease administrator burdens of installing, monitoring, and managing networked devices, while the new Device Information Delivery setting feature broadcasts desired settings of a target machine to other networked imageRUNNER systems throughout the department for identical operability.

The embedded Department ID Mode tracks and limits system access to those users assigned valid IDs and passwords. Network-enabled user authentication tools, such as Simple Device Login (SDL) and Single Sign-on (SSO), permit existing network IDs and passwords to be used so employees can maintain a single identity for all network security functions.

Once device access is granted, a number of advanced security and encryption features go to work to prevent data from being compromised or intercepted by outsiders. For even greater protection, the optional imageRUNNER Security Kit initiates the overwriting of hard disks to completely erase stored data.

In a networked environment, an administrator can control services and protocols as well as port usage. An administrator can also specify which users have access to the device using MAC address and IP address filters.



### Modify System Operability to Meet Unique Workflows

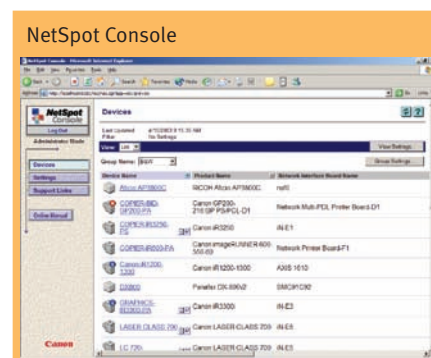
Based on Java technology, Canon MEAP (Multifunctional Embedded Application Platform) architecture allows the system to incorporate unique applications that run embedded within the device. The result is total integration into your company's infrastructure by presenting customized applications to walk-up users directly from the device's full-color LCD panel.

### Accessibility for All

The imageRUNNER 9070/105+ systems go even further to provide easy device access to every authorized user. Disabled users can operate system functions from a laptop or desktop PC using the optional Remote Operator's Software Kit,\* which emulates the control panel. Visually impaired users can receive audible job confirmation through the optional Voice Guidance Kit.\*

### Image of a Leader

As a leading producer of network-connected multifunction devices, Canon continues to set new standards for quality, performance, and reliability. That's why businesses of every size and scope trust Canon to provide office solutions that enhance productivity and make every business more competitive.



\*Check with your local Authorized Canon Dealer for availability.



**imageRUNNER 9070/105+ Specifications**

**Type:** Digital, Multifunction Imaging System  
**Imaging System:** Laser Dry Electrostatic Transfer  
**Developing System:** Dry Monocomponent Toner Projection  
**Image Server Memory:** Standard 512MB RAM + 20GB HDD  
**Interface Connections:** 10/100Base-T (RJ-45), USB 2.0 High Speed  
**First-Copy Time:** 2.8 Seconds From Platen Glass  
 4.1 Seconds From ADF  
**Warm-Up Time:** 6 Minutes or Less  
**Acceptable Originals:** Sheets, Books, 3-Dimensional Items  
**Max. Original Size:** 11" x 17"  
**Max. Copy Size:** 11" x 17"  
**Min. Copy Size:** 4-1/8" x 5-7/8"  
**Max. Mail Boxes Supported:** 100  
**Max. Copy Reservation:** 5 Jobs  
**Actual Resolution:** 600 dpi x 600 dpi  
**Interpolated Resolution:** 1200 dpi x 600 dpi (Copy)  
 2400 dpi x 600 dpi (Print)  
**Halftone:** 256 Gradations of Gray  
**Copy Speed**  
 IR 9070: 90 cpm (Letter), 45 cpm (11" x 17")  
 IR 105+: 105 cpm (Letter), 49 cpm (11" x 17")  
**Duplexing:** Standard Automatic Trayless  
**Magnification Reduction/Enlargement:** 25% to 400% in 1% Increments  
**Paper Supply**  
**Standard:** Dual Front-Loading Trays (1,500 Sheets Each)  
 Dual Front-Loading Cassettes (550 Sheets Each)  
 50-Sheet Stack Bypass  
 3,500-Sheet Paper Deck-N1/S1 (Total: 7,650 Sheets)  
**Optional:** 17 lb. Bond to 110 lb. Index (All Paper Sources)  
**Multiple Copies:** 1 to 9,999  
**Paper Weight:** 17 lb. Bond to 110 lb. Index (All Paper Sources)  
**Toner:** Magnetic Negative Toner – Estimated Yield: 36,600 Images

**ACCESSORIES**

**Automatic Document Feeder**

**Acceptable Originals:** Statement to Ledger  
**Scanning Speed:** 80 ppm (Letter)  
**Capacity:** 100 Sheets (All Sizes/20 lb.)  
**Paper Weight:** 13 lb. Bond to 110 lb. Index

**Finisher-K1N/K2N (Optional)**

**Number of Trays:** Two  
**Tray Capacity**  
**Top Tray:** 1,000 Sheets (All Sizes)  
 Offset Stacking  
 2,000 Sheets (Letter)  
**Lower Tray:** 1,000 Sheets (11" x 17", Legal)  
 Offset Stacking

**Staple Position:** 1 - Any Corner  
 2 - Side Margin  
**Max. Stapling Capacity:** 100 Sheets (Letter)  
 50 Sheets (Letter-R/Legal/11" x 17")  
**Hole-Punch (K2N Only):** 3 Holes (11" x 17", Letter)  
 2 Holes (Legal, Letter-R)

**Saddle Finisher-K3N (Optional)**

**Number of Trays:** Three  
**Tray Capacity**  
**Top Tray:** 1,000 Sheets (All Sizes)  
 Offset Stacking  
 2,000 Sheets (Letter)  
 1,000 Sheets (11" x 17", Legal)  
 Offset Stacking  
 30 Sets  
**Saddle-Stitch Tray:** 1 - Any Corner  
**Staple Position:** 2 - Side Margin  
**Max. Stapling Capacity:** 100 Sheets (Letter)  
 50 Sheets (Letter-R/Legal/11" x 17")  
**Hole-Punch:** 3 Holes (11" x 17", Letter)  
 2 Holes (Legal, Letter-R)  
**Saddle-Stitch Capabilities**  
**Saddle-Stitch Paper Sizes:** 11" x 17", Letter-R, Legal  
**Stapling Capacity:** 15 Sheets (60 Pages)  
**Folding:** V-Folding Standard

**Paper Deck-M1/T1 (Optional)**

**Paper Capacity:** 3,500 Sheets  
**Paper Size (M1):** Letter  
**Paper Size (T1):** Letter-R, Letter, Legal, 11" x 17"  
**Paper Weight:** 17 lb. Bond to 110 lb. Index

**Document Insertion Unit-B1 (Optional)**

**Paper Size:** Letter-R to 11" x 17"  
**Paper Weight:** 17 lb. Bond to 110 lb. Index  
**Feeder Capacity:** Letter, Letter-R: 100 Sheets  
 Legal, 11" x 17": 50 Sheets

**Paper Folding Unit-C1 (Optional)**

**Paper Size:** 11" x 17" Only  
**Paper Weight:** 17 lb. to 20 lb. Bond  
**Fold Type:** Z-Fold

**Booklet Trimmer-A1 (Optional)**

**Sheet Capacity:** 30 Sheets (60 Pages)  
**Stack Capacity:** 7-1/8" (Approx. 2,000 Pages)  
**Dust Capacity:** Approx. 2,000 Pages (Letter)

**Universal Send Kit-C1 (Optional)**

**Sending Method:** E-Mail, I-Fax, User Inbox, File Server (IPX, FTP, SMB)  
**Address Book Capacity:** Maximum 1,800  
**File Format**  
**Standard:** TIFF, PDF  
**Optional:** PDF (OCR)  
**Sending Size:** Statement to Ledger  
**Scan Density:** 200/300/400/600 dpi

**Multi-PDL Printer Kit-F1 (Optional)**

**Processor:** Canon Custom Processor-Shared  
**Memory:** 512MB-Shared  
**Storage:** 20GB-Shared  
**PDL Support:** PostScript 3 Emulation  
 PCL 5e, PCL 6, UFR II  
**Protocol Stacks:** Ethernet  
 IPX/SPX™: 802.2, 802.3  
 Ethernet II, 802.2 SNAP  
 TCP/IP  
 AppleTalk® Phase II  
 Novell® NetWare® v3.2, 4.1, 4.11, 4.2, 5, 5.1, 6, 6.5  
 Windows 98/Me/2000/XP  
 Windows NT® 4.0, Windows 2003 Server  
 Solaris® 1.1x, 2.5x or Later  
 Apple® System 8.0 or Later (PPD)

**imagePASS-M3 Print Controller (Optional)**

**Type:** External Stand-Alone Controller  
**Processor:** Intel® Celeron® 2.5GHz  
**Memory:** 256MB  
**Storage:** 40GB HDD  
**PDL Support:** Adobe® PostScript 3, PCL 5e, PCL 6  
**Interface Connections**  
**Standard:** 10/100/1000Base-T (RJ-45)  
**Optional:** Parallel Interface Adapter  
**Network OS:** Novell NetWare v.5.x or Later (IPX/SPX)  
 Windows 98/Me/2000/XP  
 Windows NT 4.0, Windows Server 2003  
 Solaris 8 or Later  
 Apple® Macintosh OS 9.1 or Later,  
 OS X 10.2 or Later

**Additional Functions**

**Standard:** Command WorkStation  
 Fiery Downloader  
 Impose  
 Hot Folders  
**Optional:**

**Other Accessories**

- Card Reader-D1
- Card Sets
- USB Application Interface Board-D1
- Expansion Bus-A1
- imageRUNNER Security Kit-A2
- Universal Send PDF Enhancement Kit-B1
- Barcode Printing Kit†
- Web Access Software†
- Voice Guidance Kit†
- Remote Operator's Software Kit†

▲The Document Insertion Unit-B1, the Paper Folding Unit-C1, and the Booklet Trimmer-A1 can only be used with the Saddle Finisher-K3N.

■The imageRUNNER 9070/105+ devices are not ENERGY STAR® qualified when attached to the optional imagePASS-M3 Print Controller.

† Check with your local Authorized Canon Dealer for availability.

**Dimensions Table**

Product Name	Dimensions (H x W x D)	Weight	Power
imageRUNNER 9070/105+ Main Unit	54-7/8" x 40-3/4" x 31-3/8" (1395mm x 1035mm x 795mm)	617 lb. (280kg)	208V, 60Hz, 12A
Finisher-K1N	39-1/4" x 26-1/4" x 29-1/8" (995mm x 667mm x 738mm)	141 lb. (64kg)	Directly From Main Unit
Finisher-K2N	39-1/4" x 26-1/4" x 29-1/8" (995mm x 667mm x 738mm)	145 lb. (66kg)	Directly From Main Unit
Saddle Finisher-K3N	39-1/4" x 31-5/8" x 29-1/8" (995mm x 803mm x 738mm)	279 lb. (127kg)	Directly From Main Unit
Paper Deck-N1	22-1/2" x 12-3/4" x 23" (570mm x 323mm x 583mm)	90.3 lb. (41kg)	Directly From Main Unit
Paper Deck-S1	22-5/8" x 23-3/8" x 24-1/2" (575mm x 593mm x 621mm)	101 lb. (46kg)	Directly From Main Unit
Document Insertion Unit-B1	5-5/8" x 22-1/8" x 23" (with Auxiliary Tray Opened) (144mm x 561mm x 584mm)	35 lb. (16kg)	From Finisher
Paper Folding Unit-C1	39-1/4" x 7-1/8" x 26-5/8" (995mm x 179mm x 675mm)	108 lb. (49kg)	From Finisher
Booklet Trimmer-A1	22-1/8" x 52" x 24-3/4" (562mm x 1321mm x 629mm)	149 lb. (68kg)	120V AC, 60Hz
imagePASS-M3 Print Controller	15-1/2" x 6-3/8" x 15-3/4" (394mm x 162mm x 400mm)	21 lb. (9.6kg)	110-240V, 1A

As an ENERGY STAR® Partner, Canon U.S.A., Inc. has determined that these products meet the ENERGY STAR® guidelines for energy efficiency, except when attached to the optional imagePASS-M3 Print Controller. ENERGY STAR and the ENERGY STAR mark are registered U.S. marks. Windows and Windows NT are registered trademarks of Microsoft Corporation in the United States and/or other countries. Adobe and PostScript are registered trademarks of Adobe Systems Incorporated in the United States and/or other countries. eCopy ShareScan is a trademark of eCopy, Inc. EFI, Fiery, MicroPress, and Command WorkStation are registered trademarks of Electronics for Imaging, Inc. in the U.S. Patent and Trademark Office and/or certain other foreign jurisdictions. Fiery Downloader, DocBuilder Pro, Digital StoreFront, WebTools, and FreeForm are trademarks of Electronics for Imaging, Inc. Apple and AppleTalk are registered trademarks of Apple Computer, Inc. Intel and Celeron are registered trademarks of Intel Corporation. Novell and NetWare are registered trademarks of Novell, Inc. in the United States and other countries. IPX/SPX is a trademark of Novell, Inc. Solaris is a trademark of Sun Microsystems, Inc. in the United States and other countries. CANON, IMAGERUNNER, CLC, NETSPOT, and MEAP are registered trademarks, and UNIVERSAL SEND and the GENUINE logo are trademarks of Canon Inc. in the United States and may also be registered trademarks or trademarks in other countries. REMOTE UI is a trademark of Canon U.S.A., Inc. IMAGEWARE is a registered trademark of Canon U.S.A., Inc. in the United States and is a trademark of Canon Inc. in certain other countries. IMAGEANYWARE is a trademark of Canon. All referenced product names and other marks are trademarks of their respective owners. Specifications subject to change without notice.  
 ©2006 Canon U.S.A., Inc. All rights reserved.



1-800-OK-CANON  
 www.usa.canon.com

Canon U.S.A., Inc.  
 One Canon Plaza  
 Lake Success, NY 11042

